

State of Wyoming Corner Record

(In compliance with the CORNER PERPETUATION AND FILING ACT, Wyoming Statutes, 1977, Section 36-11-101, et. seq., and the Rules and Regulations of the Board of Registration for Professional Engineers and Professional Land Surveyors)

Reverse side of this form may be used if more space is needed.

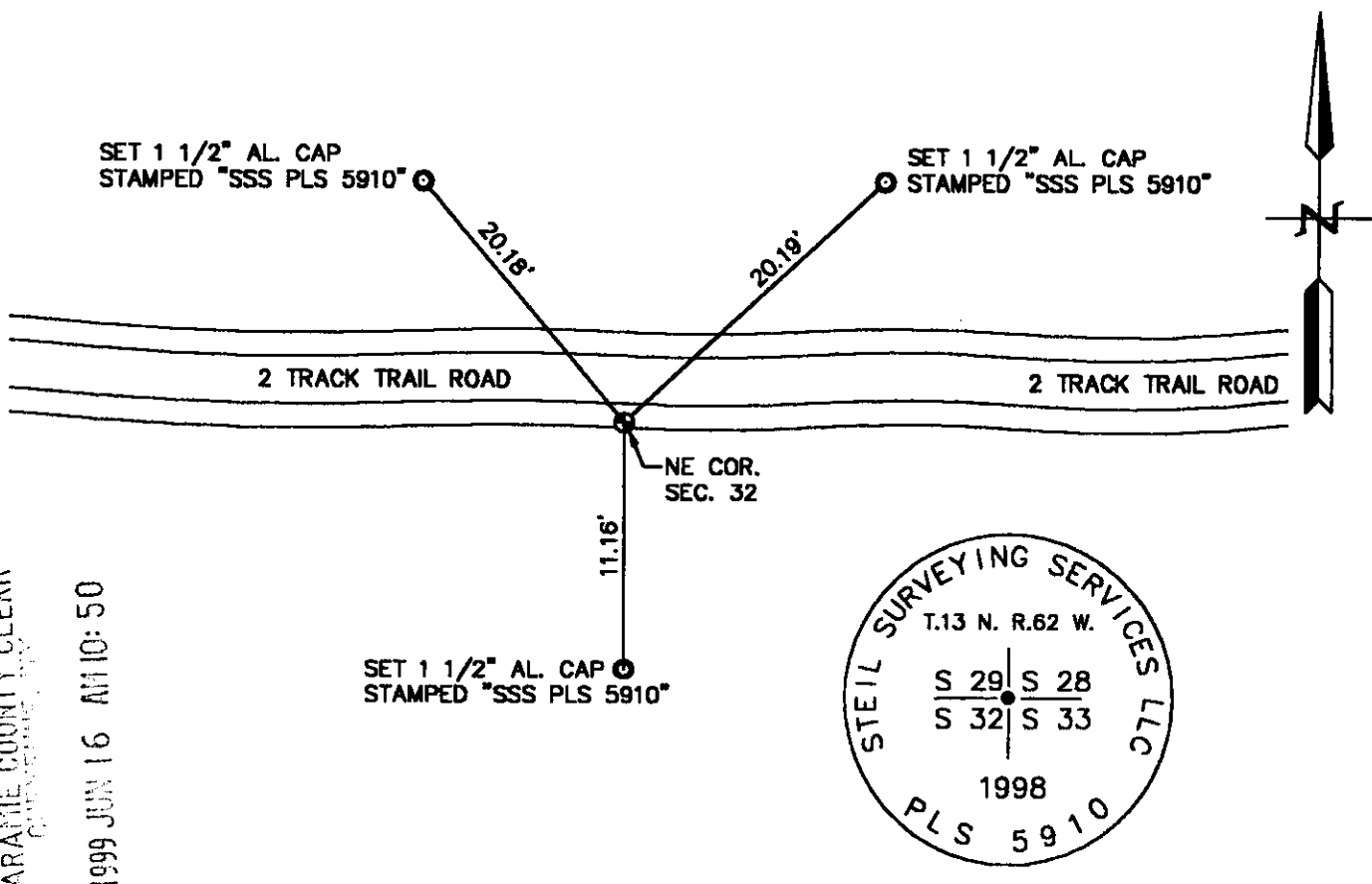
Record of original survey and citation of source of historical information (if corner is lost or obliterated). Description of corner monumentation evidence found and/or monument and accessories established to perpetuate the location of this corner. Sketch of relative location of monument, accessories, and reference points with course and distance to adjacent corner(s) (if determined in this survey). Method and rationale for reestablishment of lost or obliterated corner.

GLO RECORD: RECORD UNKNOWN.

MONUMENT FOUND: NOTHING FOUND.

MONUMENT SET: SET A 5/8" X 24" REBAR WITH A 3 1/4" ALUMINUM CAP DOWN 0.5' BELOW GROUND SURFACE. CAP STAMPED AS SHOWN BELOW.

REFERENCES: MONUMENT LIES ON THE SOUTH TRACK OF A TWO TRACK ROAD. SET 5/8" X 24" REBAR WITH 1 1/2" ALUMINUM CAPS FOR REFERENCE. NO NEARBY OBJECTS TO REFERENCE TO. REFERENCES ARE SHOWN BELOW.



254287
 LARAMIE COUNTY CLERK
 1999 JUN 16 AM 10:50

Date of Field Work: 6-1-98 Office Reference: 98135

CROSS INDEX DIAGRAM

A	1	2	3	4	5	6	7	8	9	10	11	12	13	14	15	16	17	18	19	20	21	22	23	24	25	
B																										
C																										
D																										
E																										
F																										
G																										
H																										
I																										
J																										
K																										
L																										
M																										
N																										
O																										
P																										
Q																										
R																										
S																										
T																										
U																										
V																										
W																										
X																										
Y																										
Z																										

Firm/Agency, Address
STEIL SURVEYING SERVICES, LLC.
1102 WEST 19th STREET
CHEYENNE WY 82001
 Telephone Number: (307) 634-7273

This corner record was prepared by me or under my direction and supervision.
 SEAL & SIGNATURE



BOOK 1524

Corner Name: NE SECTION CORNER Section: 32 T.13N. R.62W. 6th P.M. Cross-Index No.: V-9
 SBRPEPLS/PLSW: March 1994

0581